

Daily Pacific Builder®

The McGraw-Hill Companies

Thursday, December 3, 2009

January Completion Scheduled for Emeryville's AgeSong at Bayside Park Senior Living Complex

A January completion is scheduled for the new AgeSong at Bayside Park residential complex for seniors in Emeryville.

Designed by Berkeley-based architectural firm Kava Massih Architects, Bayside Park features high ceilings, large windows, natural materials, outside garden patios, a

Kneipp "wellness" pool, exercise and strength training center, expressive arts studio and a public café.

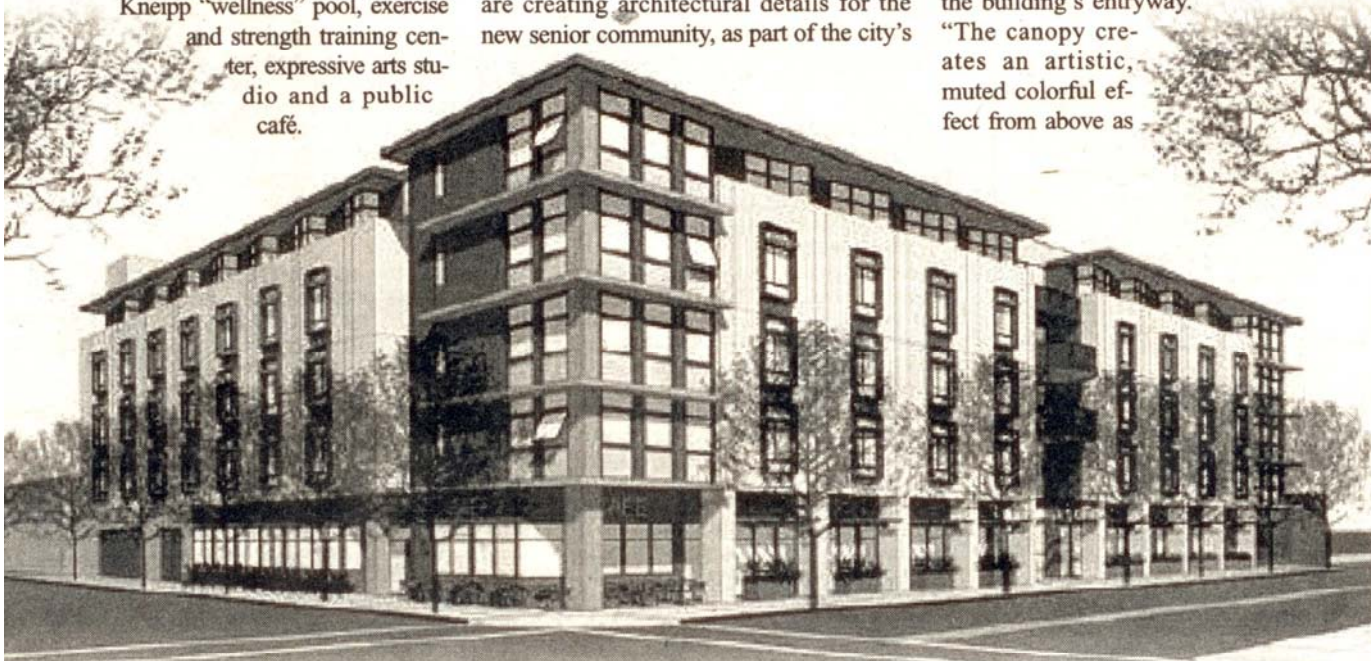
inspired by the Five Pillars of Wellness developed by the Bavarian priest Sebastian Kneipp in the 19th century, which include water, plants, nutrition, exercise and balance," he adds.

West Oakland's noted architectural glass designer Dorothy Lenehan and steel sculptor and designer Dennis Luedeman are creating architectural details for the new senior community, as part of the city's

Emeryville has 60 works of art in public and private sites that are accessible either in the public realm or in semi-public spaces such as building lobbies.

Lenehan, whose studio, Lenehan Architectural Glass, is located on Mandela Parkway in Oakland, is creating a large, abstracted canopy of sandblasted leaves for the building's entryway.

"The canopy creates an artistic, muted colorful effect from above as



The general contractor on the \$29 million project is James E. Roberts-Obayashi Corp. of Danville.

AgeSong consists of 117 assisted living units and 28 senior housing units, with retail space at the street level to promote interaction with the neighborhood and reduce the sense of isolation for residents. The project includes a specially designed rooftop garden, where residents can pursue gardening.

The 120,000-sq-ft, five-story building sits at a busy intersection in Emeryville. The design takes advantage of this by creating a large, street-level lobby with a projecting awning, which – along with the retail space – will connect residents to the active neighborhood, the architect says.

"Our philosophy of care begins with the design criteria for each of our communities and we create an ambiance that is full of light and life," says Dr. Nader Shabahangi, CEO of AgeSong.

"Bayside Park's overall design is in-

"Our philosophy of care begins with the design criteria for each of our communities and we create an ambiance that is full of light and life"

Percent for Art Ordinance. Established in 1990, the ordinance requires that private developers of commercial buildings contribute 1% of their construction budget for public art.

The complex will feature a large glass canopy at the entrance, interior glass pendants, an interior cantilevered steel staircase and outdoor planting sculptures. All are considered public art because they are easily visible and accessible to anyone passing or entering the building. Currently,

the sunlight shines through it, and it also creates a dappled pattern on the sidewalk that can be enjoyed as you walk into the building," says Lenehan. Inside the building, a hanging glass sculpture of leaves creates more light reflection and movement.

Luedeman's studio, located on Helen Street in Oakland, is the site of three steel creations for Bayside Park: a steel and wood cantilevered staircase that tapers as it ascends the building's two-story lobby; sculptured planters that separate the outdoor eating area; and sculptures between the building columns. "I enjoy creating works that initially appear simple and streamlined, but are com-

(Continued on page 3, column 1)

Bayside Park

(Continued from page 1)

plex and visually interesting, so that viewers can get different perceptions as they see the art from different angles," he said.

AgeSong's programs are co-developed with Pacific Institute, a Bay Area non-profit dedicated to research and education in the fields of gerontology and mental wellness.

In addition to the independent living program, AgeSong at Bayside Park will offer four levels of care and specialized programs that include expressive arts, hospice care, assisted living and medication management support, forgetfulness care, gero-wellness, respite care and hospice support.